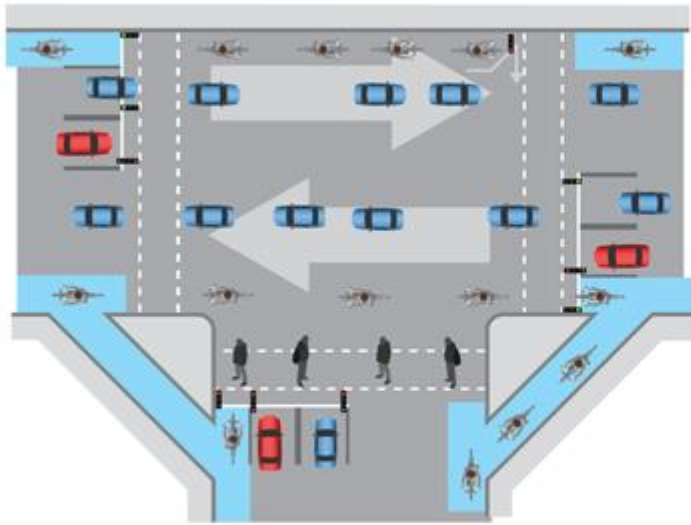


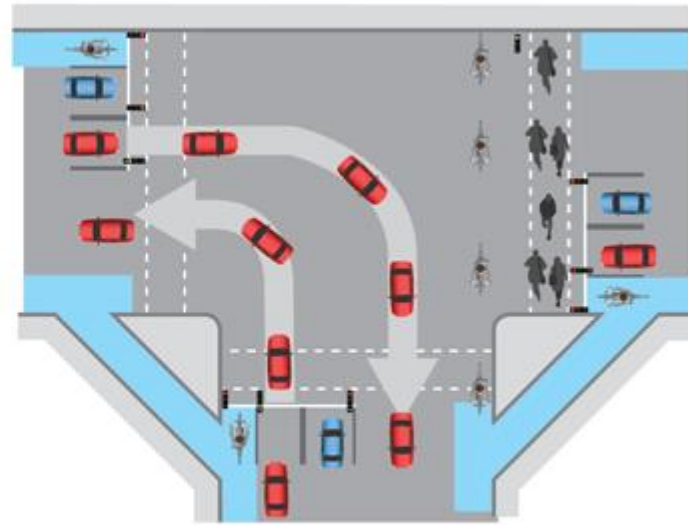
Lewisham Gateway H, sample T junction design

E.g. Lewisham Road/Lewisham High St/Loampit Vale junction





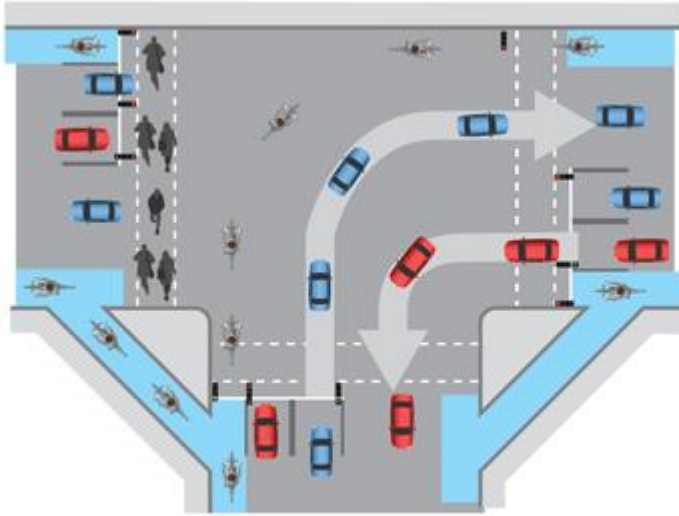
STAGE 1



STAGE 2

During Stage 1, all straight ahead east and west bound traffic - vehicles, cycles and pedestrians - can go. Turning motor traffic is held; cyclists turning right do the first stage of a two stage right turn.

In Stage 2, right turning southbound traffic can go - cycles making the second stage of their two stage right turn.



STAGE 3

During Stage 3, left turning southbound motor traffic, right turning eastbound traffic (including cycles), and cycles turning left to go west can all go at the same time.